



Happy Thanksgiving! Weekly Specials: Fri Nov 15 - Wed Nov 27, 2024

Sweet Potatoes

49¢/Lb

16 oz Organic
Cascadian Farms Vegetables

2/\$4

PICK OUT YOUR HOLIDAY TURKEY TODAY!

PRODUCE

Sweet Potatoes	49¢/lb
Butternut, Buttercup, or Acorn Squash	59¢/lb
Clementines, 3 lb	\$3.99
Yukon Gold Potatoes	69¢/lb
Pomegranates	2/\$4
Cranberries, 12 oz	2/\$4
Celery	2/\$3
Yellow Onions	99¢/lb
Pineapple	2/\$4

BAKERY

Table Talk 8" Pies, 23 oz, Select Varieties	\$4.99
French Dinner Rolls, 6 pk	\$2.99
King's Hawaiian Sweet Rolls, 12 pk	\$3.99

SPECIALTY FOODS & CHEESES

VT Farmstead Brie, 6.5 oz	\$6.99
Maplebrook Farm Original & Smoked Feta, 8 oz	\$1 OFF
VT Farmstead Maple Cheddar, Tilsit, Cranberry or Blueberry Windsordale, 7-8 oz	\$6.99
VT Creamery Creme Fraiche or Mascarpone, 8 oz	\$1 off
Natural Valley Goat Cheese, 8 oz	\$7.99
BelGioioso Italian-Style Grated Cheese, 5 oz	2/\$7
Blake Hill Preserves, 10 oz	\$6.59
Maine Crisp Buckwheat Crackers, 4 oz	\$6.29
Effie's Homemade Biscuits, 7.2oz	\$1 off
Firehook Baked Crackers, 8 oz	\$6.59

BULK FOODS

FAIR TRADE!

Equal Exchange Roasted Salted Cashews	\$9.99/lb
Save the Forest Granola	\$3.99/lb
Grind Your Own Almond Butter	\$9.99/lb
Thompson Raisins	\$3.99/lb
Lotus White Jasmine Rice	\$3.99/lb
Dark Chocolate Ginger	\$9.99/lb

MEAT

SERVICE COUNTER OPEN 7AM-7PM DAILY

Ground Pork	\$2.79/lb
Boneless Pork Shoulder	\$2.59/lb
Top Round Roast	\$4.99/lb
Boneless Chicken Thighs	\$2.59/lb
Lamb Loin Chops	\$9.99/lb
North Country Applewood Bacon or Peppered Bacon, 16 oz	\$7.59
North Country Sausage, 12-16 oz	\$6.59

SEAFOOD

Sea Best HalfMoon Cooked Shrimp Ring 26/30 w/Sauce, 20 oz	\$9.99
Wild Yellowfin Ahi Tuna, Great for Sushi, thawed or frozen	\$8.99/lb
Ducktrap Spruce Point Smoked Salmon, 8 oz	\$9.99
Yankee Trader Bacon Wrapped Scallops, 5 oz	\$8.99

DELI

SERVICE COUNTER OPEN 7AM-7PM DAILY

New England Traditions Virginia Baked Ham	\$4.49/lb
Mediterranean Wrap	\$5.99
Land O'Lakes Italian Blend American Cheese	\$5.99/lb
Co-op Made Coleslaw	\$1.99/lb

WELLNESS

South of France Bar Soap, 6 oz, Select Varieties	2/\$5
OM Relax Mushroom Gummy, 56 ct	\$14.99
Nature's Way Astragalus, 100 ct	\$9.99






THE WEEKLY



RADISH

HOLIDAY HOURS! NOV 24-27: 7AM - 8PM | NOV 28: CLOSED FOR THANKSGIVING HOLIDAY | NOV 29-30: OPEN DAILY 7AM - 8PM

GROCERY

 Pacific Foods Broth, 32 oz	2/\$5
 King Arthur Flour, 5 lbs	\$3.99
Martinelli's Sparkling Cider, 25.4 oz	2/\$5
One Pie Pumpkin, 15 oz	\$1.79
 Ocean Spray Cranberry Juice, 64 oz, Select Varieties	2/\$6
 Ocean Spray Cranberry Sauce, 14 oz,	\$1.99
Arizona Ice Tea, 128 oz	2/\$7
General Mills Chex Cereal, 12-14 oz	\$3.49
Barilla Pasta, 12-16 oz	2/\$3
Stove Top Stuffing, 6 oz	2/\$4
Knorr Rice & Noodles, 4-5.7 oz	4/\$5
Aleia's Gluten Free Stuffing Mix, 10 oz	\$4.99
French's French Fried Onions, 2.8 oz	\$3.99
Dole Canned Pineapple, 20 oz	2/\$4
College Inn Broth, 32 oz	2/\$4
Food Club Whole Kernel Canned Corn	89¢
Food Club Turkey Stuffing	2/\$3
Campbell Cream of Chicken & Cream of Mushroom Soups, 10.5 oz	4/\$5
Heinz Gravy, 12 oz	2/\$4
Hellmans Mayonnaise, 30 oz	\$5.49
Heinz Chili & Seafood Sauce, 12 oz	2/\$5
Pillsbury Bread Mixes, 14-17 oz	2/\$5
Domino Sugar, 4 lb	\$3.49
Argo Corn Starch, 16 oz	\$2.29
Hershey Baking Chips, 8-12 oz	\$2.99
Carnation Evaporated Milk, 12 oz	\$1.99
Jet Puffed Mini Marshmallows, 10 oz	2/\$3
Nabisco Crackers Triscuits & Wheat Thins, 3.5-8.5 oz	2/\$6
Wasa Crackers, 5-10 oz Select Varieties	\$2.99
Lay's Potato Chips, 7-8 oz	BOGO
 Doritos Tortilla Chips, 9.25 oz	\$3.99
Bob's Red Mill Flour, 5 lbs	\$6.49
Terra Vegetable Chips, 5-6 oz	2/\$7
Charmin Bath Tissue Mega Roll, 6 Ct	\$9.99
Bounty Paper Towels, 6 Ct	\$13.99


BEER & WINE

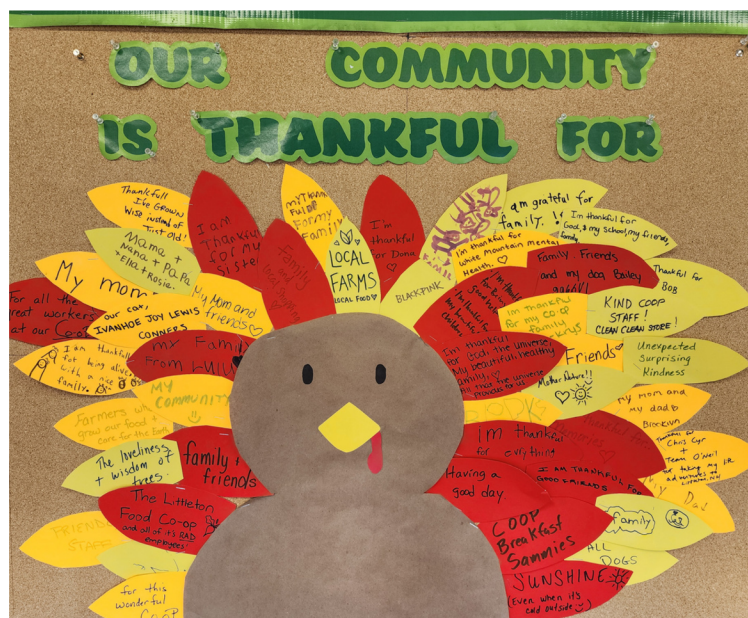
Night Shift Brewing, 12 pks	\$14.99
Ninety Plus Prosecco, 750 ml	\$8.99
 Rek-Lis Brewing Company, 4 pks	\$2 OFF
 Bonterra Wines, 750 ml	\$11.99

REFRIGERATED

 Cabot Cheese Bars, 8 oz, Select Varieties	2/\$4
 Land O' Lakes Butter, 15-16 oz	2/\$7
Pillsbury Ready Pie Crust, 14.10 oz	\$2.99
Pillsbury Croissants, 8 oz	2/\$6
 Immaculate Baking Cinnamon Rolls, 17.5 oz	2/\$8
 Cabot Cheese Shreds & Cuts, 8 oz	2/\$5
Planet Oat Oatmilk & Creamer, 32-52 oz	\$2.99
Hood Half & Half Creamer, 32 oz	\$2.79
 Cabot Whipped Cream, 7 oz	\$2.49
 Almond Breeze Almondmilk, 64 oz	\$2.99
Daisy Sour Cream, 16 oz	2/\$5
Heluva Dips, 12 oz	\$1.99
Philadelphia Cream Cheese Bar, 8 oz	2/\$5
Earth Balance Butter, 13-16 oz	\$4.99
Just Plant-Based Egg, 16 oz	\$6.49

FROZEN

 Cascadian Farms Frozen Vegetables, 16 oz	2/\$5
Cool Whip, 8 oz	2/\$3
Wymans Raspberry, Blueberries, and Mixed Berries, 12-15 oz	\$2.99
Birds Eye Frozen Vegetables Steamfresh, 10 oz	\$1.69
Daiya Frozen Pizza, 15.3-19.4 oz	\$6.99
Grain Trust Frozen Rice Sides, 20-30 oz	2/\$8



**CLOSED ON
THANKSGIVING DAY!**

This Week's Flyer:

- 12 Local Items
- 11 Organic Items
- 8 Cooperatively-Made Items
- 1 Fair Trade items

Open Daily
7 AM to 8 PM
Deli & Meat: 7am-7pm

Sales & Discounts:

*Discounts apply to eligible items only, and standard restrictions apply. Have a question? Come see the friendly folks at our Service Desk for details.

43 Bethlehem Rd.
Littleton, N.H.

(603) 444-2800
LittletonCoop.com

THE WEEKLY RADISH

HAPPY THANKSGIVING!
WE WILL BE CLOSED ON THU NOV 28
FOR THE HOLIDAY.

Fri Nov 22 – Wed Nov 27, 2024

Event Calendar LittletonCoop.com/Events

Thu Nov 28: Thanksgiving Day (Store Closed)
Thu Dec 5: Senior Member Discount Day
Mon Dec 9: Board Meeting @5PM on Zoom (RSVP)
Sat Dec 14: HolidayFest - More Info Soon!

To RSVP for an event, visit our website:
littletoncoop.com/events, or email info@littletoncoop.org

739 Thanksgiving Boxes for Neighbors in Need!



We surpassed our goal! Thank you to everyone who donated.

We started out with a goal to raise funds for 600 boxes of Thanksgiving sides for local folks in need, and we beat that number! Our team has been busy organizing pallets and crates and cartloads of ingredients for all the local food access groups we've partnered with. It's truly a sight to behold! Those groups will be picking up their share of the food this week, and then distributing it all to friends & neighbors in need. A huge, heartfelt thank you to everyone who contributed!

Not a Member Yet? Join Today!

Learn more, buy shares, start a new account:
www.littletoncoop.com/membership



Now through December 3, for every Field Day item you purchase National Cooperative Grocers is donating \$0.05 to NATIFS, an Indigenous-led organization working to strengthen Native foodways nationally.

Field Day includes many pantry basics at an affordable price, from canned goods to cereals to household cleaners. Look for them on our shelves!

It's Turkey Time



The turkeys have arrived! Our Meat Department has been busy getting everything ready for the holidays, and the first round of Thanksgiving gobblers are finally here. In our cases you'll find a wide array of local, organic, and natural birds, all ready for your holiday table.

Not a meat eater? We also have vegan roasts in our freezers as well! And of course - don't forget the cranberry, stuffing, and pie!

Thanksgiving Planning 101

Item	per person	groups of 10
Entrées	½ to ¾ pound	5-7 pounds
Potatoes, sweet potatoes, squash	½ to ⅓ pound	4 pounds
Green beans, Brussels sprouts, carrots	¼ to ⅓ pound	2½ pounds
Stuffing	½ to ⅓ pound	4 pounds
Gravies and sauces	¼ cup	2-3 pounds
Turkey (whole)	1 to 1½ pounds	10-15 pounds
Cranberries	2 ounces or ⅓ cup	1½ pounds or 2 cups
Snacks/appetizers	2-4 ounces	2-3 pounds
Pie	1 slice	2 9-inch pans
Ice cream	½ cup	½ gallon

USDA meat and poultry hotline

1-888-MPHotline (1-888-674-6854)

TTY: 1-800-256-7072

10:00 a.m. to 4:00 p.m. Eastern time,

Monday through Friday

E-mail: mp hotline.fsis@usda.gov

MORE FROM YOUR STORE

Beaujolais is Here!



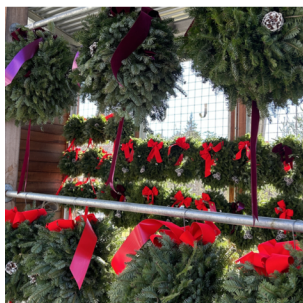
This young french wine is made from hand-harvested gamay grapes and is released on the third Thursday of November every year (with great revelry and fanfare!). Low in tannins, fruity and light, and best served slightly chilled. It pairs perfectly with roast turkey and is an excellent option if you're looking for something to pair with your Thanksgiving dinner.

Cooperative Cranberries



You might have a co-op on your turkey day table! Ocean Spray, well known for their famous ruby red cranberry sauce, just so happens to be one of our favorite Co-ops. It's entirely owned by 700 farmer-families who not only grow those beautiful berries, but also make decisions about Ocean Spray's future, and reap their fair share of the co-op's profits.

Deck the Halls w/ Local Greenery



Get a jump start on your holiday decorating with fresh evergreen wreaths and kissing balls! These beauties hail from Piermont Plant Pantry and are a guaranteed hit in any festive household. Hang them on your porch or front door now, so you're ready when the snow flies and your guests arrive.

Art in the Cafe: Rebecca Fullerton



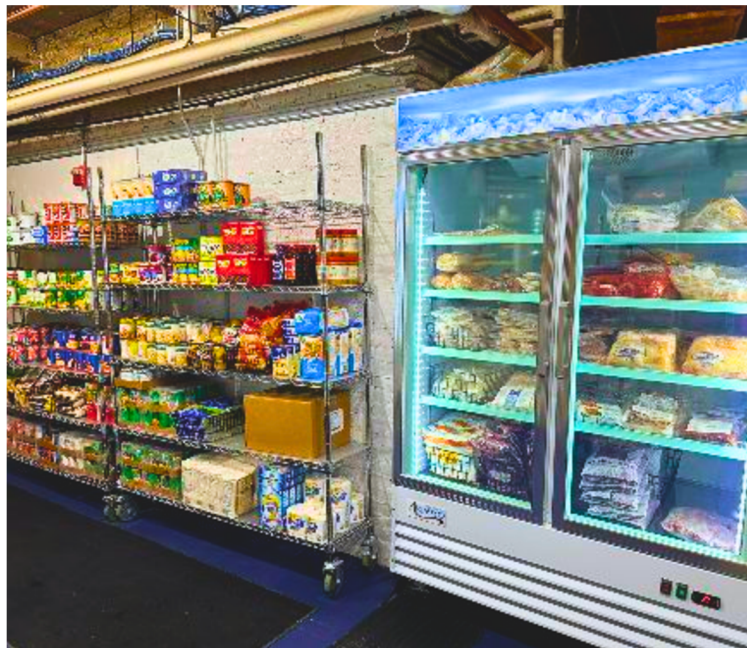
Rebecca has been painting in oils and watercolors for over twenty-five years, with a focus on mountains and landscapes of the White Mountains of New Hampshire and Maine. Her work is available for purchase through the end of December through the Co-op, and 95% of the proceeds are returned directly to the artist. We love local art!

Happy Thanksgiving!



YOUR CO-OP COMMUNITY

Round Up for Food Pantries



Round Up this November to support our local Food Pantries!

We believe everyone in our community deserves access to good, nutritious, delicious food. Life can throw some major curveballs, leaving many folks in our community struggling to put food on the table. The food pantries and food access organizations in our area fill that need, supplying free nutritious food to help those folks out that need it.

All funds from the this month's Partner of the Month program will be distributed equally between the following organizations: Whitefield Food Pantry, Good Neighbor Food Pantry, Bethlehem Food Pantry, Bethlehem Little Free Pantry, All Saints Food Cupboard, Littleton Little Free Pantry, Littleton Food Pantry, Littleton Area Mutual Aid (LAMA), and Artisans with a Mission (AWAM)

Whitefield Food Pantry

3 School Street, Whitefield (at Whitefield Christian Church)
Open: Thursdays @ 3:30 - 5:00 pm

Good Neighbor Food Pantry

44 Church Street Franconia
Open: Tuesdays @ 11 am - 12 pm

Bethlehem Food Pantry

2155 Main St., Bethlehem (In Town Hall)
Open: Mondays & Thursdays @ 2 - 3 pm; Tuesdays - 10 am - 12 pm

Bethlehem Little Free Pantry

2155 Main St., Bethlehem (Behind Town Hall)
Open 24 hours a day, 7 days a week

All Saints Food Cupboard

35 School St., Littleton
Tuesdays, Thursdays, and Sundays - 9 am - 10 am

Little Free Pantry

189 Main St., Littleton
Open 24 hours a day, 7 days a week

Littleton Food Pantry

70 Redington St., Littleton
Tuesdays, Wednesdays, Saturdays 10am-12pm

LAMA (Littleton Area Mutual Aid)

@littletonareamutualaid on Instagram