



Happy Thanksgiving! Weekly Specials: Fri Nov 15 - Wed Nov 27, 2024



**PRODUCE**

Sweet Potatoes	49¢/lb
Butternut, Buttercup, or Acorn Squash	59¢/lb
Clementines, 3 lb	\$3.99
Yukon Gold Potatoes	69¢/lb
Pomegranates	2/\$4
Cranberries, 12 oz	2/\$4
Celery	2/\$3
Yellow Onions	99¢/lb
Pineapple	2/\$4

**BAKERY**

Table Talk 8" Pies, 23 oz, Select Varieties	\$4.99
French Dinner Rolls, 6 pk	\$2.99
King's Hawaiian Sweet Rolls, 12 pk	\$3.99

**SPECIALTY FOODS & CHEESES**

VT Farmstead Brie, 6.5 oz	\$6.99
Maplebrook Farm Original & Smoked Feta, 8 oz	\$1 OFF
VT Farmstead Maple Cheddar, Tilsit, Cranberry or Blueberry Windsordale, 7-8 oz	\$6.59
VT Creamery Creme Fraiche or Mascarpone, 8 oz	\$1 off
Natural Valley Goat Cheese, 8 oz	\$7.99
BelGioioso Italian-Style Grated Cheese, 5 oz	2/\$7
Blake Hill Preserves, 10 oz	\$6.59
Maine Crisp Buckwheat Crackers, 4 oz	\$6.29
Effie's Homemade Biscuits, 7.2oz	\$1 off
Firehook Baked Crackers, 8 oz	\$6.59

**BULK FOODS**

Equal Exchange Roasted Salted Cashews	\$9.99/lb
Save the Forest Granola	\$3.99/lb
Grind Your Own Almond Butter	\$9.99/lb
Thompson Raisins	\$3.99/lb
Lotus White Jasmine Rice	\$3.99/lb
Dark Chocolate Ginger	\$9.99/lb

FAIR TRADE!

**MEAT**

SERVICE COUNTER OPEN 7AM-7PM DAILY

Ground Pork	\$2.79/lb
Boneless Pork Shoulder	\$2.59/lb
Top Round Roast	\$4.99/lb
Boneless Chicken Thighs	\$2.59/lb
Lamb Loin Chops	\$9.99/lb
North Country Applewood Bacon or Peppered Bacon, 16 oz	\$7.59
North Country Sausage, 12-16 oz	\$6.59

**SEAFOOD**

SB HalfMoon Cooked Shrimp Ring 26/30 w/Sauce, 20 oz	\$9.99
Wild Yellowfin Ahi Tuna, Great for Sushi, thawed or frozen	\$8.99/lb
Ducktrap Spruce Point Smoked Salmon, 8 oz	\$9.99
Yankee Trader Bacon Wrapped Scallops, 5 oz	\$8.99

**DELI**

SERVICE COUNTER OPEN 7AM-7PM DAILY

New England Traditions Virginia Baked Ham	\$4.49/lb
Mediterranean Wrap	\$5.99
Land O'Lakes Italian Blend American Cheese	\$5.99/lb
Co-op Made Coleslaw	\$1.99/lb

**WELLNESS**

South of France Bar Soap, 6 oz, Select Varieties	2/\$5
OM Relax Mushroom Gummy, 56 ct	\$14.99
Nature's Way Astragalus, 100 ct	\$9.99





HOLIDAY HOURS! NOV 24-27: 7AM - 8PM | NOV 28: CLOSED FOR THANKSGIVING HOLIDAY | NOV 29-30: OPEN DAILY 7AM - 8PM

## GROCERY

 Pacific Foods Broth, 32 oz	2/\$5
 King Arthur Flour, 5 lbs	\$3.99
Martinelli's Sparkling Cider, 25.4 oz	2/\$5
One Pie Pumpkin, 15 oz	\$1.79
 Ocean Spray Cranberry Juice, 64 oz, Select Varieties	2/\$6
Arizona Ice Tea, 128 oz	2/\$7
General Mills Chex Cereal, 12-14 oz	\$3.49
Barilla Pasta, 12-16 oz	2/\$3
Stove Top Stuffing, 6 oz	2/\$4
Knorr Rice & Noodles, 4-5.7 oz	4/\$5
Aleia's Gluten Free Stuffing Mix, 10 oz	\$4.99
French's French Fried Onions, 2.8 oz	\$3.99
Dole Canned Pineapple, 20 oz	2/\$4
College Inn Broth, 32 oz	2/\$4
Food Club Whole Kernel Canned Corn	89¢
Food Club Turkey Stuffing	2/\$3
Campbell Cream of Chicken & Cream of Mushroom Soups, 10.5 oz	4/\$5
Heinz Gravy, 12 oz	2/\$4
Hellmans Mayonnaise, 30 oz	\$5.49
Heinz Chili & Seafood Sauce, 12 oz	2/\$5
Pillsbury Bread Mixes, 14-17 oz	2/\$5
Domino Sugar, 4 lb	\$3.49
Argo Corn Starch, 16 oz	\$2.29
Hershey Baking Chips, 8-12 oz	\$2.99
Carnation Evaporated Milk, 12 oz	\$1.99
Jet Puffed Mini Marshmallows, 10 oz	2/\$3
Nabisco Crackers Triscuits & Wheat Thins, 3.5-8.5 oz	2/\$6
Wasa Crackers, 5-10 oz Select Varieties	\$2.99
Lay's Potato Chips, 7-8 oz	<b>BOGO</b>
Doritos Tortilla Chips, 9.25 oz	\$3.99
 Bob's Red Mill Flour, 5 lbs	\$6.49
Terra Vegetable Chips, 5-6 oz	2/\$7
Charmin Bath Tissue Mega Roll, 6 Ct	\$9.99
Bounty Paper Towels, 6 Ct	\$13.99


## BEER & WINE

Night Shift Brewing, 12 pks	\$14.99
Ninety Plus Prosecco, 750 ml	\$8.99
 Rek-Lis Brewing Company, 4 pks	<b>\$2 OFF</b>
 Bonterra Wines, 750 ml	\$11.99

## REFRIGERATED

  Cabot Cheese Bars, 8 oz, Select Varieties	2/\$4
 Land O' Lakes Butter, 15-16 oz	2/\$7
Pillsbury Ready Pie Crust, 14.10 oz	\$2.99
Pillsbury Croissants, 8 oz	2/\$6
 Immaculate Baking Cinnamon Rolls, 17.5 oz	2/\$8
  Cabot Cheese Shreds & Cuts, 8 oz	2/\$5
Planet Oat Oatmilk & Creamer, 32-52 oz	\$2.99
Hood Half & Half Creamer, 32 oz	\$2.79
  Cabot Whipped Cream, 7 oz	\$2.49
 Almond Breeze Almondmilk, 64 oz	\$2.99
Daisy Sour Cream, 16 oz	2/\$5
Heluva Dips, 12 oz	\$1.99
Philadelphia Cream Cheese Bar, 8 oz	2/\$5
Earth Balance Butter, 13-16 oz	\$4.99
Just Plant-Based Egg, 16 oz	\$6.49

## FROZEN

 Cascadian Farms Frozen Vegetables, 16 oz	2/\$5
Cool Whip, 8 oz	2/\$3
Wymans Raspberry, Blueberries, and Mixed Berries, 12-15 oz	\$2.99
Birds Eye Frozen Vegetables Steamfresh, 10 oz	\$1.69
Daiya Frozen Pizza, 15.3-19.4 oz	\$6.99
Grain Trust Frozen Rice Sides, 20-30 oz	2/\$8



**CLOSED ON  
THANKSGIVING DAY!**

### This Week's Flyer:

- 12 Local Items
- 11 Organic Items
- 8 Cooperatively-Made Items
- 1 Fair Trade items

### Sales & Discounts:

\*Discounts apply to eligible items only, and standard restrictions apply. Have a question? Come see the friendly folks at our Service Desk for details.

**Open Daily**  
7 AM to 8 PM  
Deli & Meat: 7am-7pm

43 Bethlehem Rd.  
Littleton, N.H.

(603) 444-2800  
LittletonCoop.com

# THE WEEKLY RADISH

HAPPY THANKSGIVING!  
WE WILL BE CLOSED ON NOVEMBER 28  
FOR THE HOLIDAY.

Fri Nov 15 - Wed Nov 27, 2024

## Event Calendar [LittletonCoop.com/Events](http://LittletonCoop.com/Events)

Sat Nov 16: Jigsaw Puzzle Competition @3pm (RSVP)  
Thu Nov 28: Thanksgiving Day (Store Closed)  
Thu Dec 5: Senior Member Discount Day  
Mon Dec 9: Board Meeting @5PM on Zoom (RSVP)  
Sat Dec 14: HolidayFest - More Info Soon!

To RSVP for an event, visit our website:  
[littletoncoop.com/events](http://littletoncoop.com/events), or email [info@littletoncoop.org](mailto:info@littletoncoop.org)

## The Puzzle Competition is Back



**Saturday November 16 @3PM**  
Attention puzzle nerds: Gather your team of 1-4 players and join us in the Co-op Cafe to puzzle as fast as you can! The winning team will receive a prize, and everyone gets a fun afternoon. To register, one person from each team should email [info@littletoncoop.org](mailto:info@littletoncoop.org) and provide the names of the puzzlers. Space is limited, so sign up today.

**Not a Member Yet? Join Today!**  
Learn more, buy shares, start a new account:  
[www.littletoncoop.com/membership](http://www.littletoncoop.com/membership)

## Help a Local Family This Holiday



### Fundraising Ends Saturday November 16!

Great news- we met our goal of 600 boxes this week, thanks to the generosity of our members and customers! We're distributing boxes of Thanksgiving side dishes to eight different pantries this year, so every little bit helps us make sure there is plenty of food to go around.

Please consider adding a donation to your order this week - each \$10 coupon you purchase at checkout will donate a holiday box filled with potatoes, stuffing, veggies, gravy, and more to a local family in need!

## It's Turkey Time



The holiday is fast approaching, so if you have a special bird in mind for your Thanksgiving feast, be sure to reserve it ASAP. Note that some of our larger-size and specialty birds are limited quantity - don't wait! Order online today, stop by the Meat Department, or call 603-444-2800.

Order Online: [www.LittletonCoop.com/Turkeys](http://www.LittletonCoop.com/Turkeys)



Don't panic, though. We'll also have plenty of excellent quality fresh and frozen turkeys to choose from as we get closer to the holiday, so there's no need to pre-order if you're not particular. Just come on in and pick one out!

## Have a Field Day & Help NATIFS



Now through December 3, for every Field Day item you purchase National Cooperative Grocers is donating \$0.05 to NATIFS, an Indigenous-led organization working to strengthen Native foodways nationally.

Field Day includes many pantry basics at an affordable price, from canned goods to cereals to household cleaners. Look for them on our shelves!



# MORE FROM YOUR STORE

## New Art in the Co-op Cafe



Art by Rebecca M Fullerton: November & December 2024

Rebecca has been painting in oils and watercolors for over twenty-five years, with a focus on mountains and landscapes of the White Mountains of New Hampshire and Maine. Each year she hikes in the backcountry, taking in the dramatic scenery of the wilderness, sketching, painting, and taking photographs for later use. She is always trying to capture the special atmosphere unique to this area with its changeable weather, steep trails, and limitless views as a way to promote the unique and fragile beauty of places that deserve conservation.

Rebecca's work is available for purchase through the end of December through the Co-op. What makes the Cafe Gallery special? 95% of the proceeds are returned directly to local artists, so you can feel great about supporting local art when you buy from the Co-op!

## Deck the Halls w/ Local Greenery

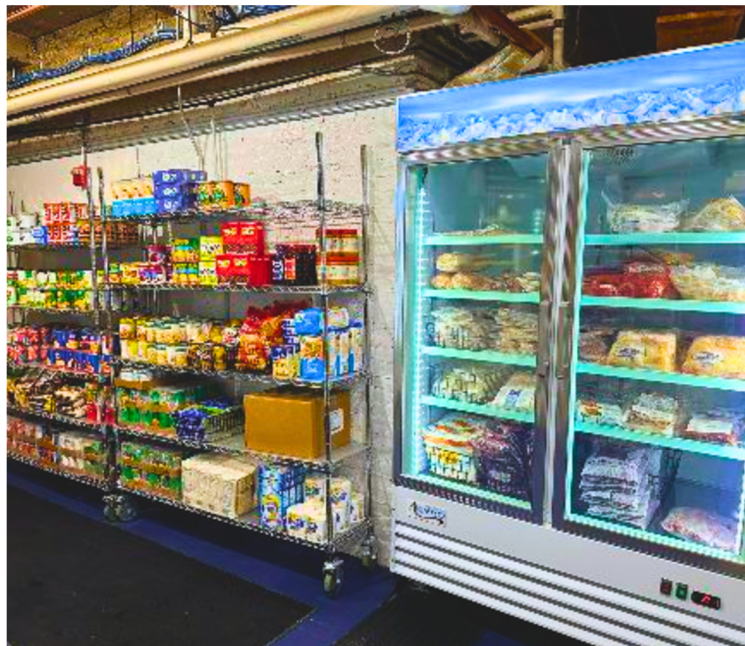


Nothing screams "Hello early holiday guests! Yes I do have my life together!" more than having your wreaths and/or kissing balls hung by Thanksgiving!

These beauties hail from Piermont Plant Pantry and are a guaranteed hit in any festive household. Plus, purchasing one stand-out piece is much easier than setting up an entire replica snow village while also trying to cook the turkey.

# YOUR CO-OP COMMUNITY

## Round Up for Food Pantries



### Round Up this November to support our local Food Pantries!

We believe everyone in our community deserves access to good, nutritious, delicious food. Life can throw some major curveballs, leaving many folks in our community struggling to put food on the table. The food pantries and food access organizations in our area fill that need, supplying free nutritious food to help those folks out that need it.

All funds from the this month's Partner of the Month program will be distributed equally between the following organizations: Whitefield Food Pantry, Good Neighbor Food Pantry, Bethlehem Food Pantry, Bethlehem Little Free Pantry, All Saints Food Cupboard, Littleton Little Free Pantry, Littleton Food Pantry, Littleton Area Mutual Aid (LAMA), and Artisans with a Mission (AWAM)

#### Whitefield Food Pantry

3 School Street, Whitefield (at Whitefield Christian Church)  
Open: Thursdays @ 3:30 - 5:00 pm

#### Good Neighbor Food Pantry

44 Church Street Franconia  
Open: Tuesdays @ 11 am - 12 pm

#### Bethlehem Food Pantry

2155 Main St., Bethlehem (In Town Hall)  
Open: Mondays & Thursdays @ 2 - 3 pm; Tuesdays - 10 am - 12 pm

#### Bethlehem Little Free Pantry

2155 Main St., Bethlehem (Behind Town Hall)  
Open 24 hours a day, 7 days a week

#### All Saints Food Cupboard

35 School St., Littleton  
Tuesdays, Thursdays, and Sundays - 9 am - 10 am

#### Little Free Pantry

189 Main St., Littleton  
Open 24 hours a day, 7 days a week

#### Littleton Food Pantry

70 Redington St., Littleton  
Tuesdays, Wednesdays, Saturdays 10am-12pm

#### LAMA (Littleton Area Mutual Aid)

@littletonareamutualaid on Instagram